

Supplementary Data S1.

## **Workshop for the Standardization of the Pathologic Diagnosis of the Appendiceal Mucinous Neoplasm (I)**

Thank you for your participation in the workshop for the Standardization of the Pathologic Diagnosis of the Appendiceal Mucinous Neoplasm. This questionnaire will be used as materials for smooth progression and education of the participants at the workshop supported by the Gastrointestinal Pathology Study Group of the Korean Society of Pathologists. The survey is composed of 3 stages, including basic information of the participants. If you want to participate, please check the following contents and respond to the questions.

Thank you.

- Agree to survey

(Basic information) What is your workplace?

- Commercial Lab including practitioner  
 General Hospital  
 University Hospital  
 Others

(Basic information) What is your majority?

- Resident (No majority)  
 Gastrointestinal Pathology  
 Non-Gastrointestinal Pathology  
 Others

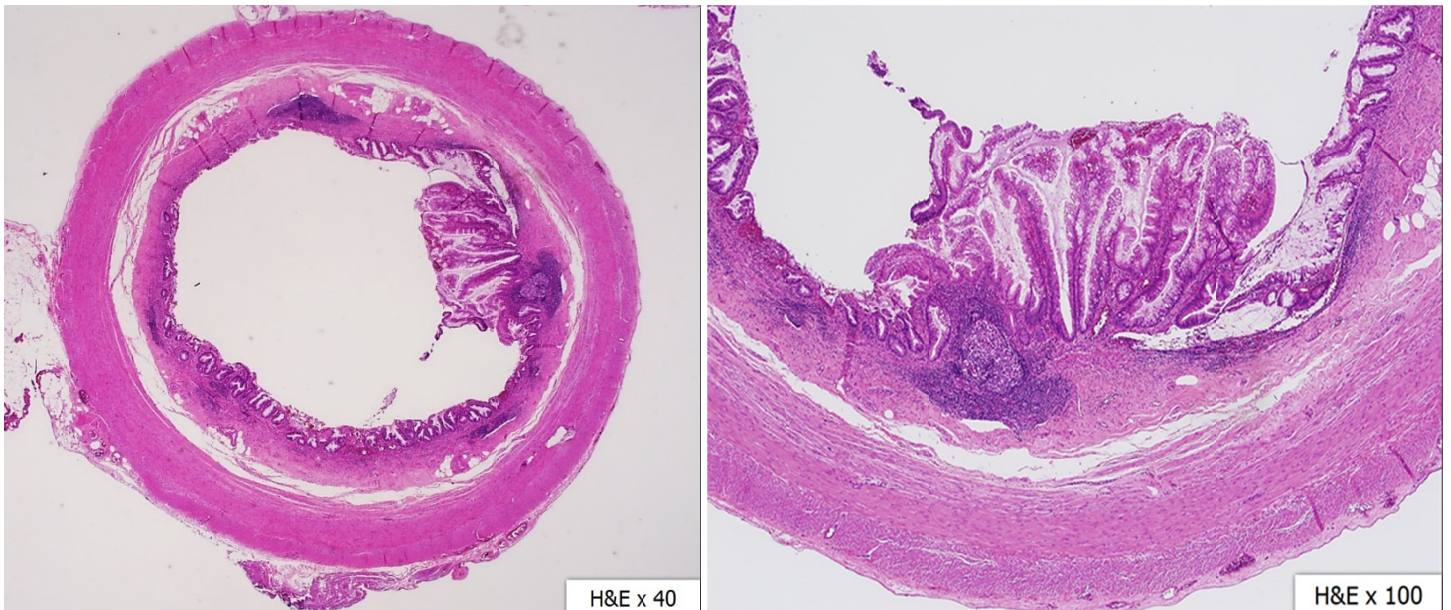
(Basic information) How long have you diagnosed?

- Not yet  
 Less than five years  
 Five years but less than ten years  
 Ten years or more  
 Others

## I. Diagnosis of Appendiceal Mucinous Neoplasms

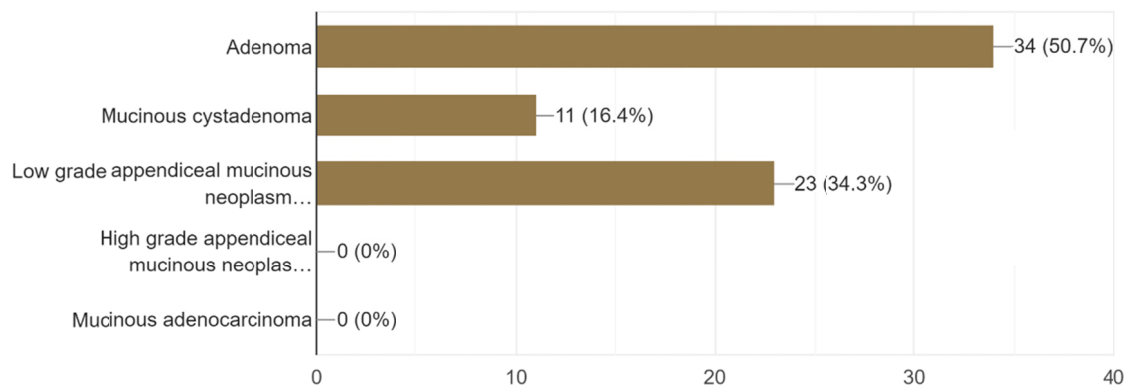
(The followings are questions about the diagnosis and definition of appendiceal mucinous neoplasms. Please choose the best answer)

Q 1. The followings are microscopic features of appendiceal mucinous neoplasm. Please choose the best or preferred diagnosis in the examples.

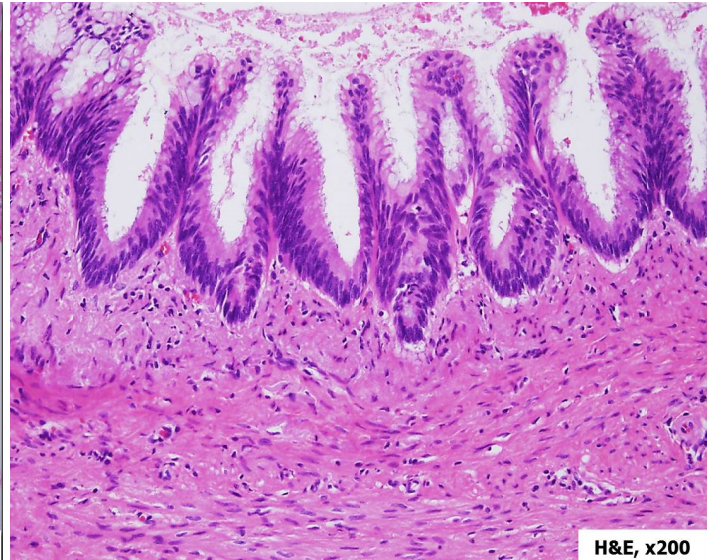
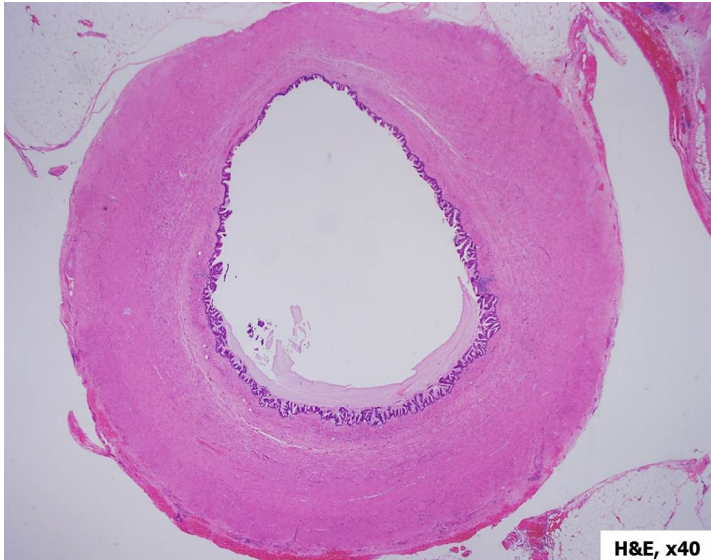


- Adenoma
- Mucinous cystadenoma
- Low grade appendiceal mucinous neoplasm (LAMN)
- High grade appendiceal mucinous neoplasm (HAMN)
- Mucinous adenocarcinoma

Response: 67

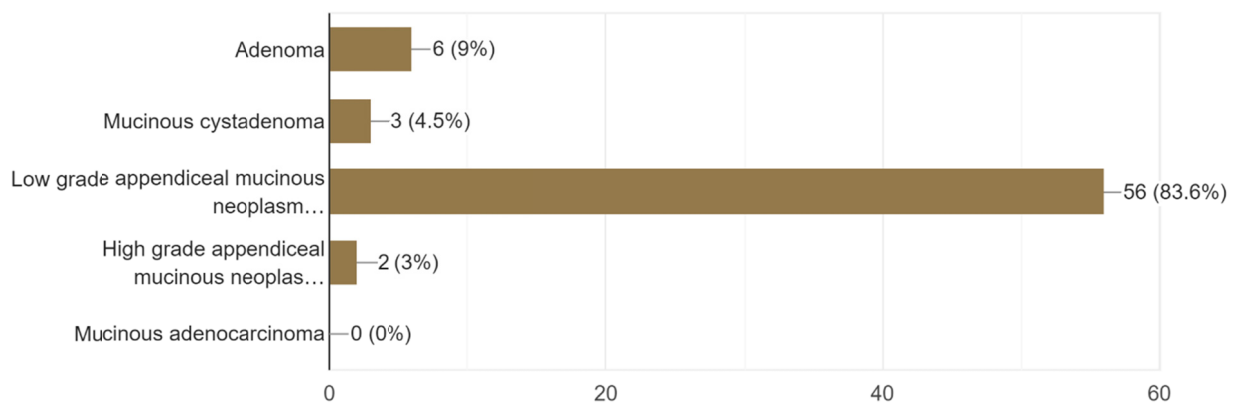


Q 2. The followings are microscopic features of appendiceal mucinous neoplasm. Please choose the best or preferred diagnosis in the examples.

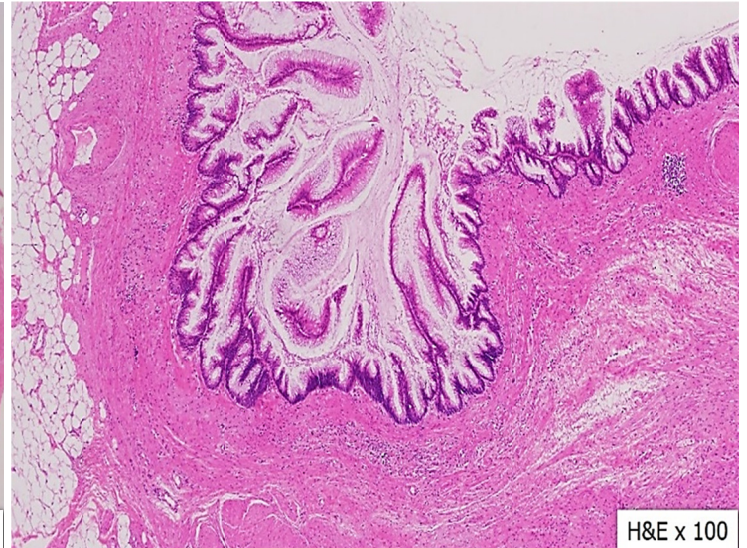


- Adenoma
- Mucinous cystadenoma
- Low grade appendiceal mucinous neoplasm (LAMN)
- High grade appendiceal mucinous neoplasm (HAMN)
- Mucinous adenocarcinoma

Response: 67

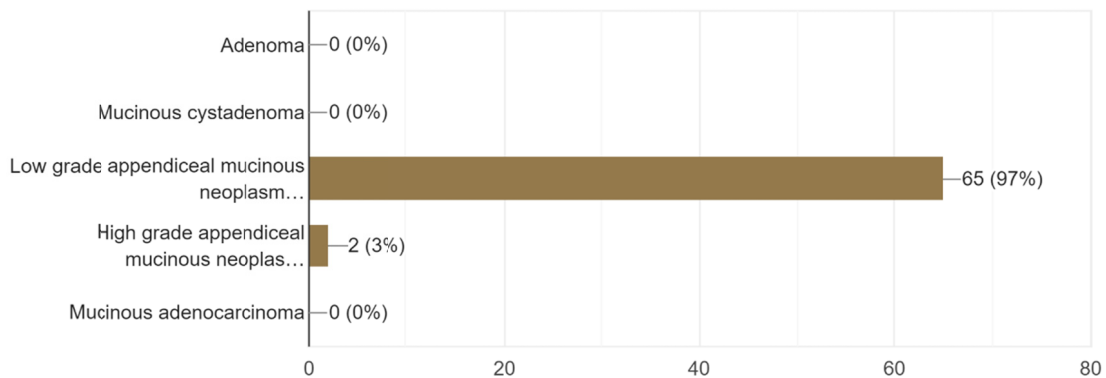


Q 3. The followings are microscopic features of appendiceal mucinous neoplasm. Please choose the best or preferred diagnosis in the examples.

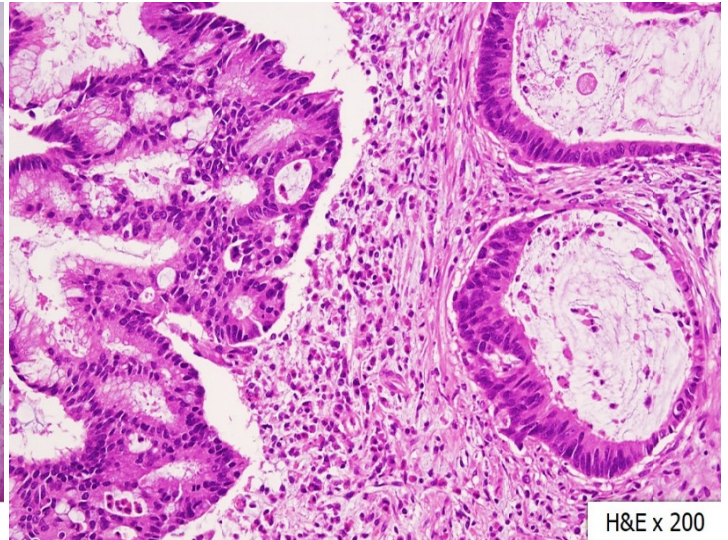
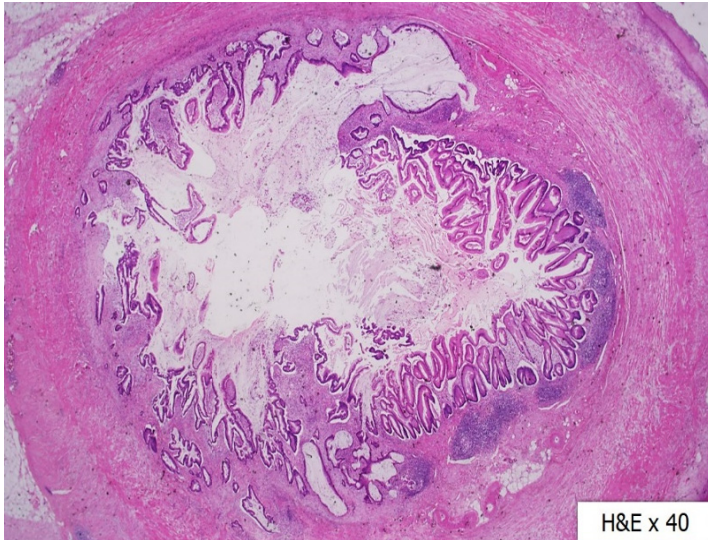


- Adenoma
- Mucinous cystadenoma
- Low grade appendiceal mucinous neoplasm (LAMN)
- High grade appendiceal mucinous neoplasm (HAMN)
- Mucinous adenocarcinoma

Response: 67

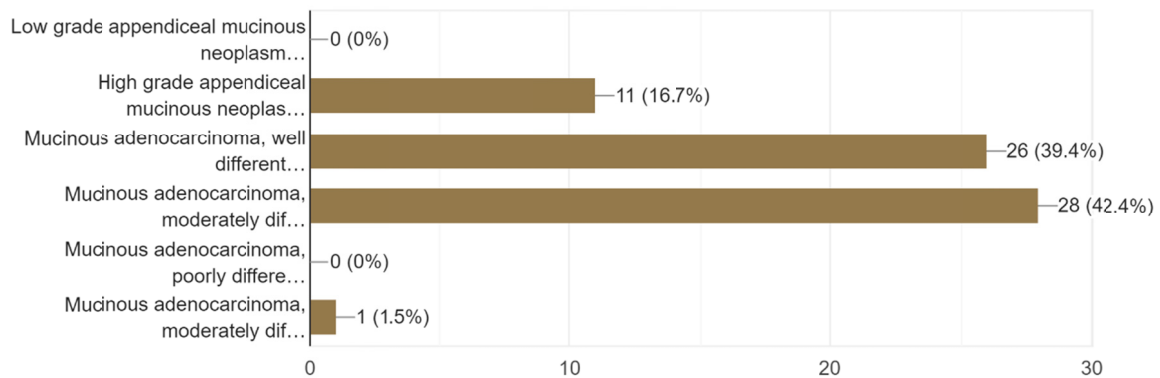


Q 4. The followings are microscopic features of appendiceal mucinous neoplasm. Please choose the best or preferred diagnosis in the examples.

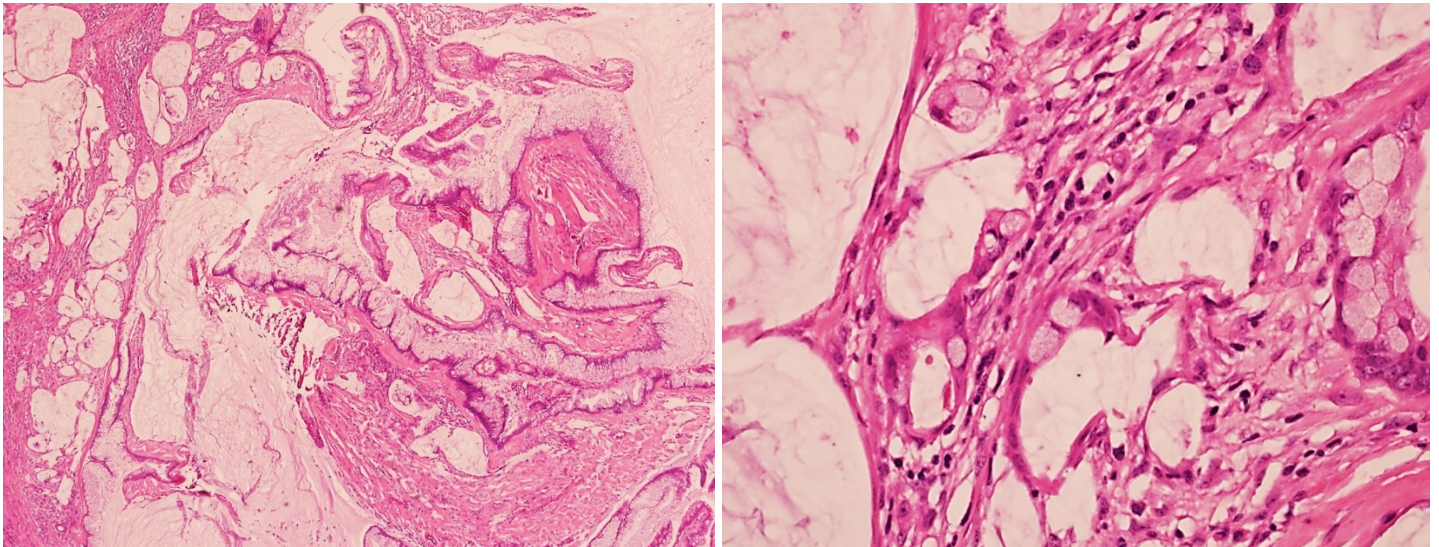


- Low grade appendiceal mucinous neoplasm (LAMN)
- High grade appendiceal mucinous neoplasm (HAMN)
- Mucinous adenocarcinoma, well differentiated
- Mucinous adenocarcinoma, moderately differentiated
- Mucinous adenocarcinoma, poorly differentiated

Response: 66

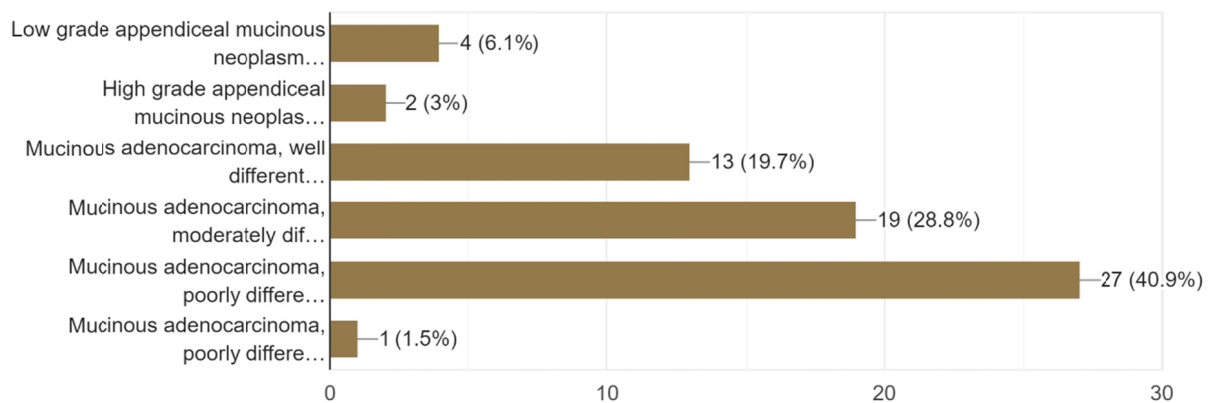


Q 5. The followings are microscopic features of appendiceal mucinous neoplasm. Please choose the best or preferred diagnosis in the examples.



- Low grade appendiceal mucinous neoplasm (LAMN)
- High grade appendiceal mucinous neoplasm (HAMN)
- Mucinous adenocarcinoma, well differentiated
- Mucinous adenocarcinoma, moderately differentiated
- Mucinous adenocarcinoma, poorly differentiated

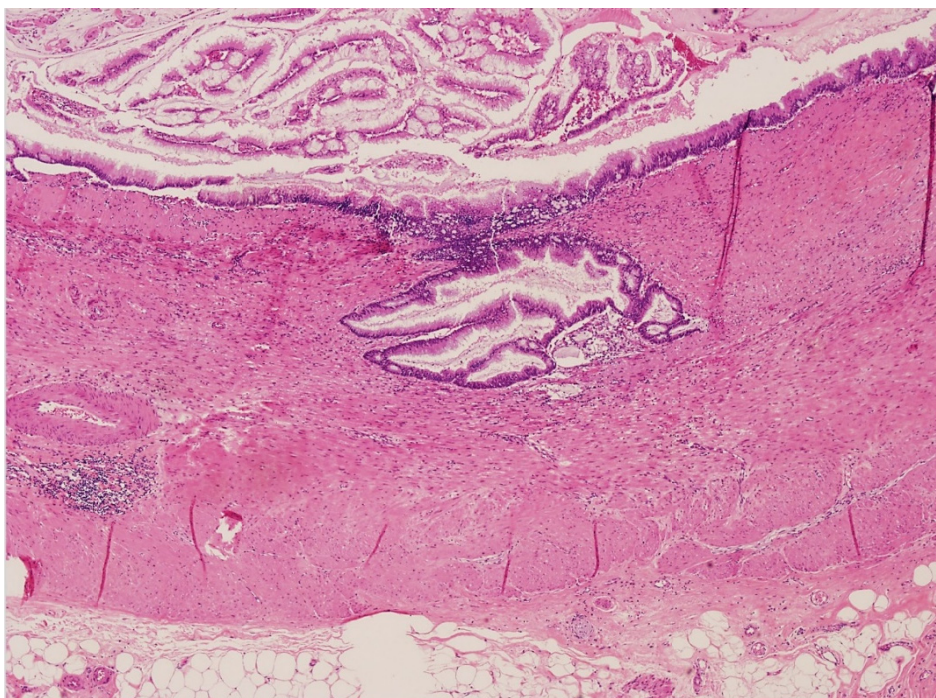
Response: 66



## II. pTNM Stage of the Appendiceal Mucinous Neoplasms and Diagnosis of Pseudomyxoma Peritonei

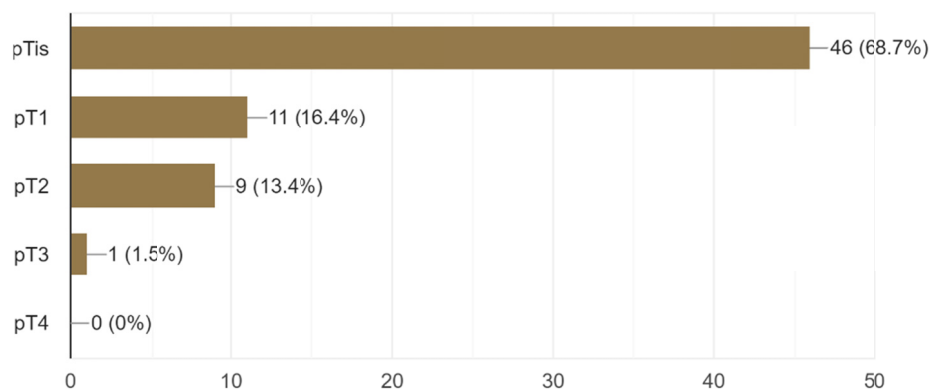
(The followings are questions about the AJCC TNM staging of the appendiceal mucinous neoplasm and pseudomyxoma peritonei. Please choose the best answer)

Q 1. The below is microscopic features of low-grade appendiceal mucinous neoplasm (LAMN). Please choose the best or preferred pT stage according to the AJCC 8th Cancer Staging Manual.

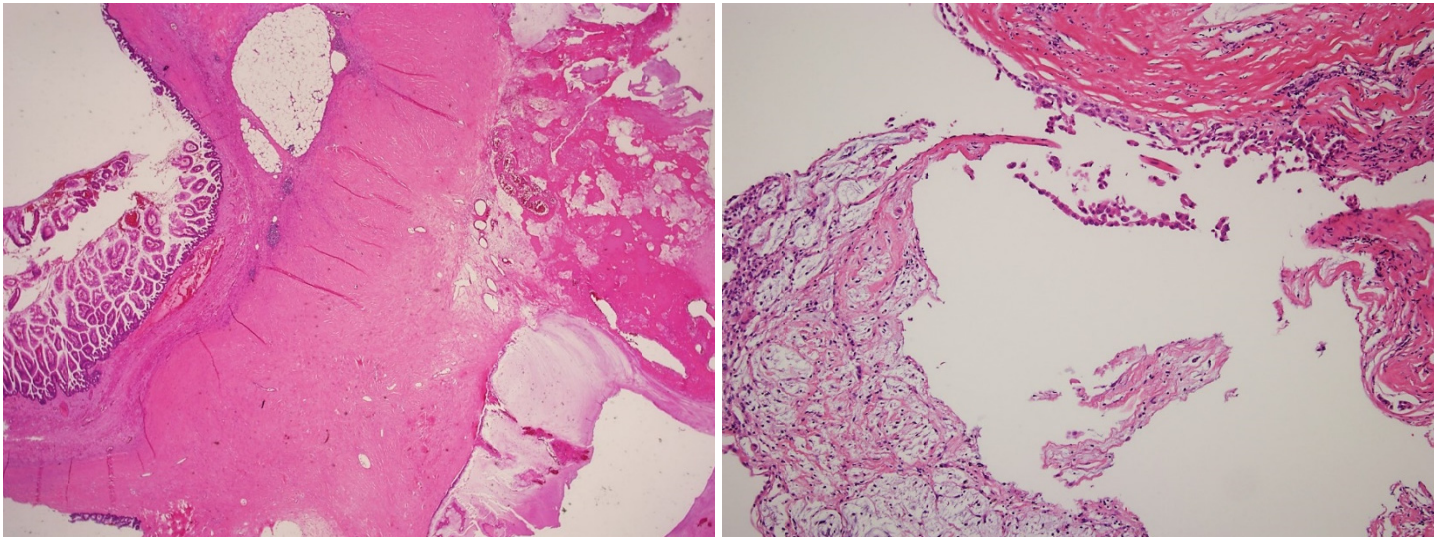


- pTis
- pT1
- pT2
- pT3
- pT4

Response: 67

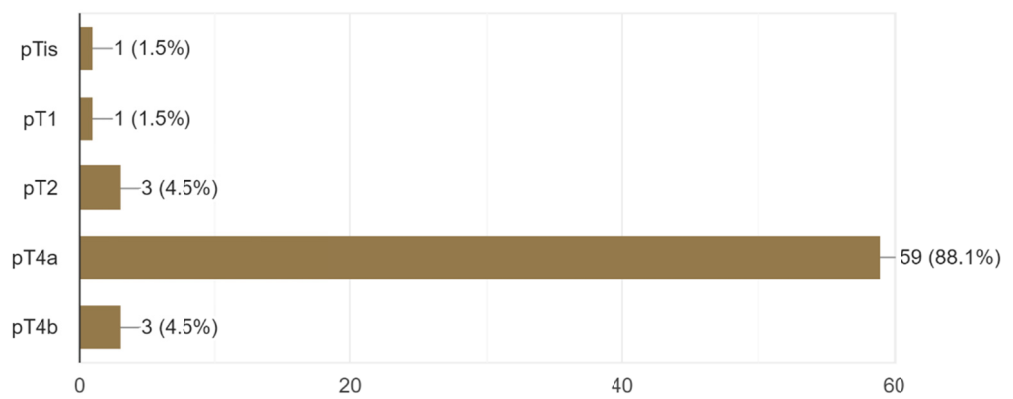


Q 2. The followings are microscopic features of low-grade appendiceal mucinous neoplasm (LAMN).  
Please choose the best or preferred pT stage according to the AJCC 8th Cancer Staging Manual.



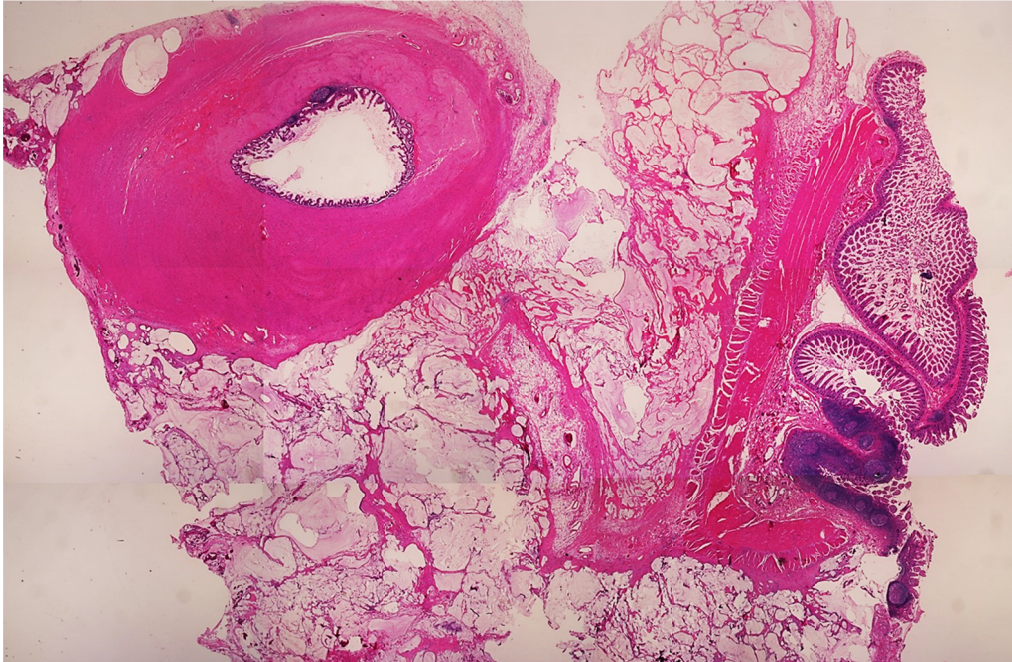
- pTis
- pT1
- pT2
- pT3
- pT4

Response: 67



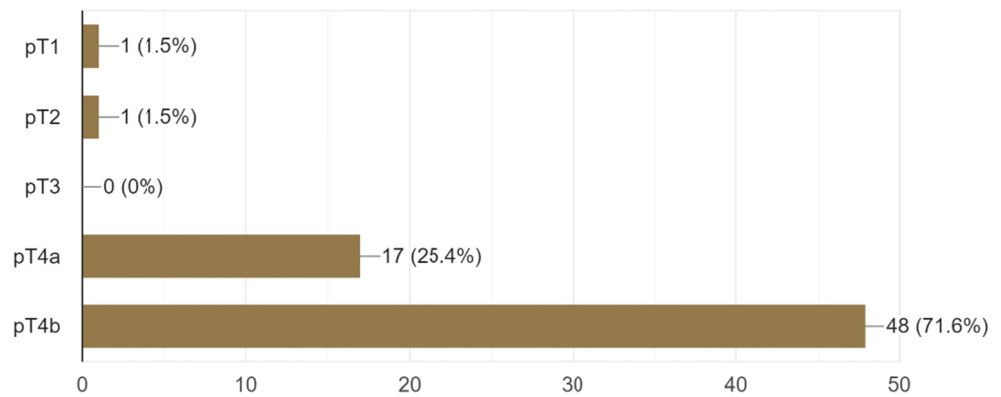


Q 3. The followings are microscopic features of low-grade appendiceal mucinous neoplasm (LAMN). Please choose the best or preferred pT stage according to the AJCC 8th Cancer Staging Manual.

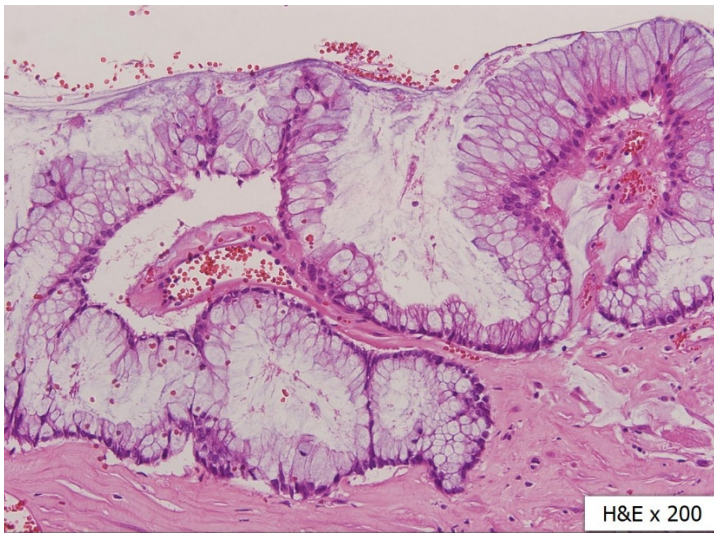


- pT1
- pT2
- pT3
- pT4a
- pT4b

Response: 67

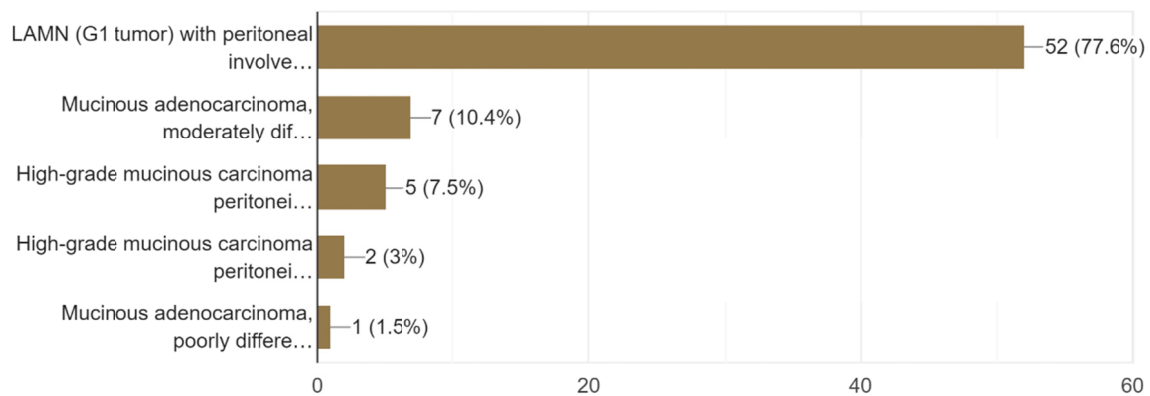


Q 4. The followings are microscopic features of psudomyxoma peritonei. Please choose the best or preferred diagnosis in the examples.

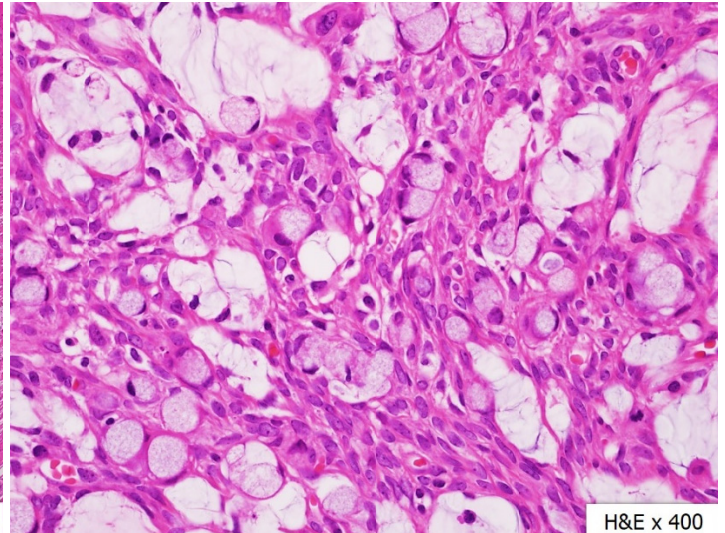
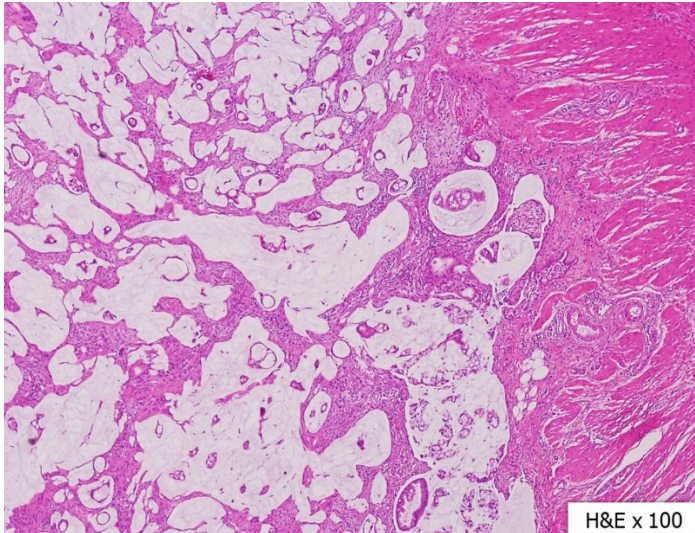


- LAMN (G1 tumor) with peritoneal involvement
- Mucinous adenocarcinoma, moderately differentiated (G2)
- High-grade mucinous carcinoma peritonei (G2)
- High-grade mucinous carcinoma peritonei with signet ring cell (G3)
- Mucinous adenocarcinoma, poorly differentiated (G3)

Response: 67



Q 5. The followings are microscopic features of pseudomyxoma peritonei. Please choose the best or preferred diagnosis in the examples.



- LAMN (G1 tumor) with peritoneal involvement
- Disseminated peritoneal adenomucinosis
- Mucinous adenocarcinoma, moderately differentiated (G2)
- High-grade mucinous carcinoma peritonei (G2)
- Mucinous adenocarcinoma, poorly differentiated (G3)

Response: 67

