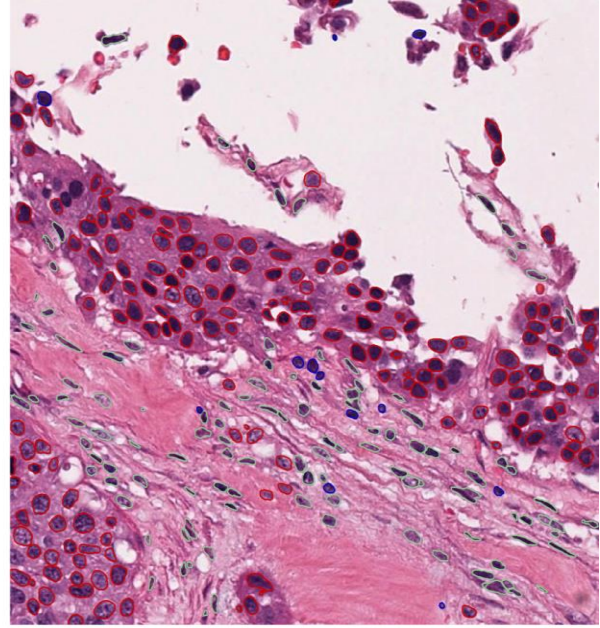
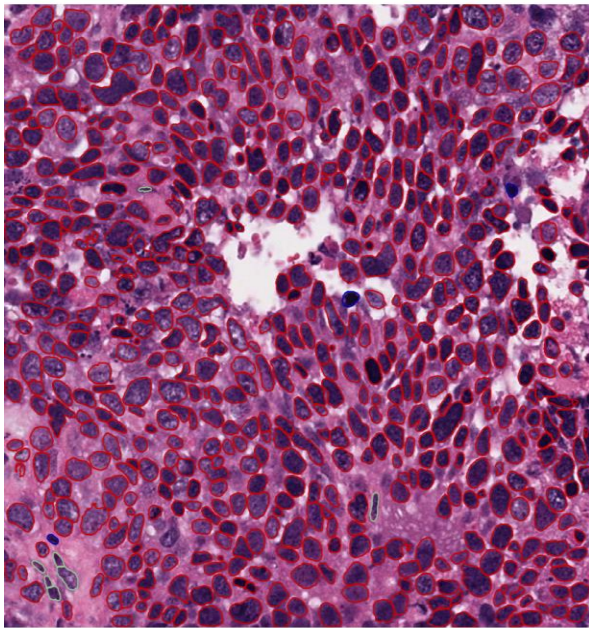


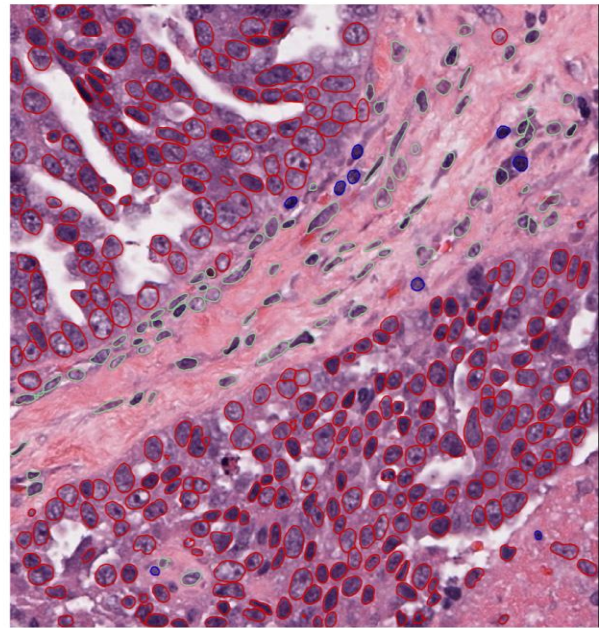
CHC 1






CHC 4



CHC 14



CHC 27

-  Tumor cell nucleus
-  Stromal cell nucleus
-  Inflammatory cell nucleus

Supplementary Fig. S4. Tumor, stromal and inflammatory cell's nucleus segmentation via Hover-Net visualized by Qupath. In the patches from common histomic cluster (CHCs) 1, 4, 14, and 27, tumor cells are highlighted in red, stromal cells in green, and inflammatory cells in blue.